

# SAILING INSTRUCTIONS

## REVISED R1

### TRIANGULAR SERIES 2018 THE DON MANNING TROPHY

#### 1. RACE TIME AND WIND CONDITIONS

Race 1 and 2 Warning signal will be 1055hrs.

Race 3 Warning Signal signal will be 1330hrs

- 1.1 Racing for the day will be abandoned if a Gale Force or higher warning issued by the Bureau of Meteorology is current on the morning the race is scheduled.
- 1.2 Racing will not commence if the winds are less than 5 knots or greater than 27 knots average wind strength 10 minutes before the warning signal.

#### 2. RULES

This race will be governed by the current Australian Sailing Racing Rules of Sailing and Safety Regulations of Australian Sailing (AS) (Except as altered by these sailing instructions).

The Organizing Authority is Cowes Yacht Club Inc, Newhaven Yacht Squadron Inc. and Rhyll Yacht Club Inc. The Race Committee for each race shall be appointed by the organizing authority of these Phillip Island Yacht Clubs.

#### 3. NOTICE TO COMPETITORS

Notice to Competitors shall be relayed via VHF radio channel 73 at least one hour before the advertised start time.

#### 4. CHANGES TO SAILING INSTRUCTIONS

Any changes to the sailing instructions shall be advised by VHF radio on channel 73 at least one hour before the advertised start time. The Committee boat shall fly code flag L up to the warning signal.

#### 5. SAFETY REGULATIONS

All entries must meet the safety equipment standards as set out in the current ASRRS Addendum 'A' Special Regulations Part 1, Category 6 with the following inclusions:

- |           |   |
|-----------|---|
| 3.07.4    | Removable hatches to have locks and lanyards                                    |
| 3.24.3    | Engine, permanently installed or outboard                                       |
| 3.24.4    | Outboard motors for trailable or keel boats, to be mounted at all times         |
| 3.24.5(a) | Engine to provide minimum speed into 12 knot head wind                          |
| 3.24.5(c) | Sufficient fuel for 1 hour of motoring at minimum speed (3.24.5(a)).            |
| 3.25      | Marine VHF transceiver installed as specified (27Mhz or HF, only not permitted) |
| 4.21.1    | Life buoy or other approved device with drogue (no light for day light race)    |
| 4.23.1    | Heaving line accessible to cockpit  |

Entrants shall declare their intention to start by "signing on" by radio no later than 20 minutes prior to the

start. This must be done by VHF radio, verbal sign on is not permitted.

All boats to state: Boat Name, POB (number of persons on board) and Sail Number.

**Note: Finish or retirement is to be declared in a similar manner and is mandatory.**

Failure to sign on by radio will be considered a DNS without reference to a protest.

IMPORTANT: Mandatory for all yachts to maintain a radio watch for the duration of the race and any additional safety requirements for individual clubs must be met. The rescue procedures of the organizing clubs place a high reliance on competitors being able to render assistance to those in trouble. Entrants are advised that spot checks on category compliance may be made.

Port Rule 62B for Victorian Proclaimed Ports, including the waters of Western Port, requires small vessels IN ALL CIRCUMSTANCES to keep clear of Commercial shipping. Boats found to have contravened this Rule will be subject to disqualification.

## 6. STARTING

All races start in the Western Port bay area north of Rhyll Yacht Club.

Races 1 and 2 involve a short beat to windward prior to sailing the course as listed. The rounding side of this windward mark (an orange or yellow buoy) shall be declared by the raising of a red (Port) or green (Starboard) flag on the committee boat masthead.

**Race 3 will be a Triangle and Windward and return style course, the start line will be at the bottom of the course.**

The race will be started in accordance with Rule 26 with the warning signal made 5 minutes before the starting signal.

## 7 COURSES

The course number for each race will be signaled as follows: The course flag: Numeral 1 for course 1 or Numeral 2 for course 2 will also be the class flag flown as the 5 minute warning signal. The course number will also be announced on Ch 73 by the Race Committee boat before the warning signal.

Please Note: All racing is prohibited within the Parks Victoria 5 knot inshore boating and swimming restricted zones. Any boat detected sailing deliberately within the restricted zones while racing by the Race Committee will be subject to disqualification. Please refer to the Parks Victoria website (<http://parkweb.vic.gov.au>) for details of the restricted zones and signage. All racing marks are outside these zones.

## Race 1 Rhyll to Cowes

### Course 1 – length approx. 16nm

- Start
- Windward Mark (rounding side signaled as per SI from the Committee boat)
- CYC buoy to Starboard
- Ch Buoy 11 to Starboard
- Ch 13 buoy to Starboard
- THB buoy to Starboard
- CYC buoy to Starboard
- Ch 13 buoy to Starboard
- THB buoy to Starboard
- CYC buoy to Starboard
- Finish between CYC finish mark and CYC Club house tower.

### Course 2 – length approx. 16nm

- Start
- Windward Mark (rounding side signaled as per SI from the Committee boat)
- CYC buoy to Starboard
- Ch 13 to Starboard
- THB to Starboard
- CYC buoy to Starboard
- Ch 13 to Starboard
- CYC buoy to Starboard
- Ch 13 to Starboard
- THB to Starboard
- CYC buoy to Starboard
- Finish between CYC finish mark and CYC Club house tower.

## Race 2 Rhyll to Newhaven

### Course 1– Length approx. 14nm

- Start
- Windward Mark (rounding side signaled as per SI from the Committee boat for this rounding only)
- Loelia Shoal East Cardinal to starboard (Newhaven YS D)
- Newhaven Top Light to starboard (Newhaven YS A)
- Churchill Island Buoy to starboard (Newhaven YS Buoy B)
- Newhaven Buoy C to starboard
- Newhaven Top Light to starboard (Newhaven YS A)
- Finish Line - A line between the Newhaven Channel light (green) and the North East corner of the Newhaven Yacht Squadron clubhouse.

### Course 2 – Length approx. 18nm

- Start
- Windward Mark (rounding side signaled as per SI from the Committee boat for this rounding only)
- Newhaven Buoy C to port
- Reef Island West Cardinal to starboard
- Elizabeth Island Hydrology to port (Newhaven YS F)
- Newhaven Top Light to starboard (Newhaven YS A)
- Finish Line - A line between the Newhaven Channel light (green) and the North East corner of the Newhaven Yacht Squadron clubhouse.

## **Race 3 Rhyll to Rhyll**

### **Course 1 – Length approx. 12nm – All rounding marks to Port**

- Start
- RYC Laid Mark B
- RYC Laid Mark C
- RYC Laid Mark A
- RYC Laid Mark B
- Finish

### **Course 2 – Length approx. 12nm – All rounding marks to Starboard**

- Start
- RYC Laid Mark B
- RYC Laid Mark C
- RYC Laid Mark A
- RYC Laid Mark B
- Finish

## **8 SHORTENING OF COURSE**

A shorten course will be signaled with code flag “S” flown from the host Committee Boat and on VHF Ch 73. The lead boat will then proceed directly to the next mark for a finish or as notified by VHF radio. All other boats must follow the lead boat completed correct course to finish. This changes Rule 32.2

## **9 TIME LIMIT**

The first boat must finish within 5.0 hours for the race to be valid. All other yachts must finish no later than 7.5 hours after the start provided the first boat has finished within 5 hours. Boats that do not make the time limit will be classified as a DNF.

## **10 PROTESTS**

Protests shall be in writing and shall be lodged with the Race Committee of the Phillip Island Yacht Clubs. The Boating Officer and/or Rear Commodore of each club are members of the race committee, or their deputies or committee boat, within one hour of the last boat finishing. The race committee will hear protests approximately in the order of receipt and as soon as practicable.

## **11 ALTERNATIVE PENALTIES**

The 720 degree turn penalty, in accordance with Racing Rules (rule 44.1, 44.2) will apply.

## **12 RADIO COMMUNICATIONS**

Radio communications will be conducted on VHF Marine VHF channel 73. All yachts should maintain a listening watch on VHF channel 73 during the race. Sign on and sign off is mandatory.

Race 1. Sign on with Cowes Yacht Club CK11, then Cowes Yacht Club VJ3CK after the start and to the end of the race. Sign off with Cowes Yacht Club VJ3CK at finish

Race 2. Sign on with Newhaven Yacht Squadron NH11, then Newhaven NH11 after the start and to the end of the race. Sign off with Newhaven Yacht Squadron when finished on NH11

Race 3. Will be conducted by Rhyll RH1. Sign off with Rhyll Yacht Club when finished on RH1.

## 13 SCORES

To include as many boats as possible, each Club team will be governed by the smallest club team for each race minus one boat: e.g. if the smallest club team has four starters, each team score will be based on 3 best performances. Minimum team number shall be 3 boats with all 3 boats to count in this minimum number case.

The “low points scoring system” shall apply. Handicap will be based on CBH yardstick.

## 14 INDEMNITY

All those taking part in this series of individual races, do so at their own risk. The Yacht Clubs, Phillip Island are not responsible for the seaworthiness of a yacht whose entry is accepted or for the adequacy of its equipment. Attention is drawn to the YA RRS Fundamental Rules. The yacht Clubs of Phillip Island, its members or those crewing rescue or committee craft assisting in the conduct of the race, will not be held responsible for damage or injury caused in any circumstances or in any manner whatsoever.

These sailing instructions in no way limit or reduce the complete and inescapable responsibility for the sole and entire management of the yacht he or she is sailing.

Attention is drawn to RRS 4 “Decision to Race”, which state: “The responsibility for a boat’s decision to participate in a race or to continue racing is hers alone.”

## 15 INSURANCE

All competitors are required to have personally, or through their boats, Third Party Liability Insurance to a minimum of \$10,000,000 and adequate racing insurance.

## 16 RESULTS

Triangular Series race results will be posted on the Cowes Yacht Club website. [www.cowesyachtclub.com](http://www.cowesyachtclub.com) under the Sailing Events - race results tab.

# TRIANGULAR SERIES 2018

## APPROXIMATE COURSE DIAGRAMS -ADDENDUMA

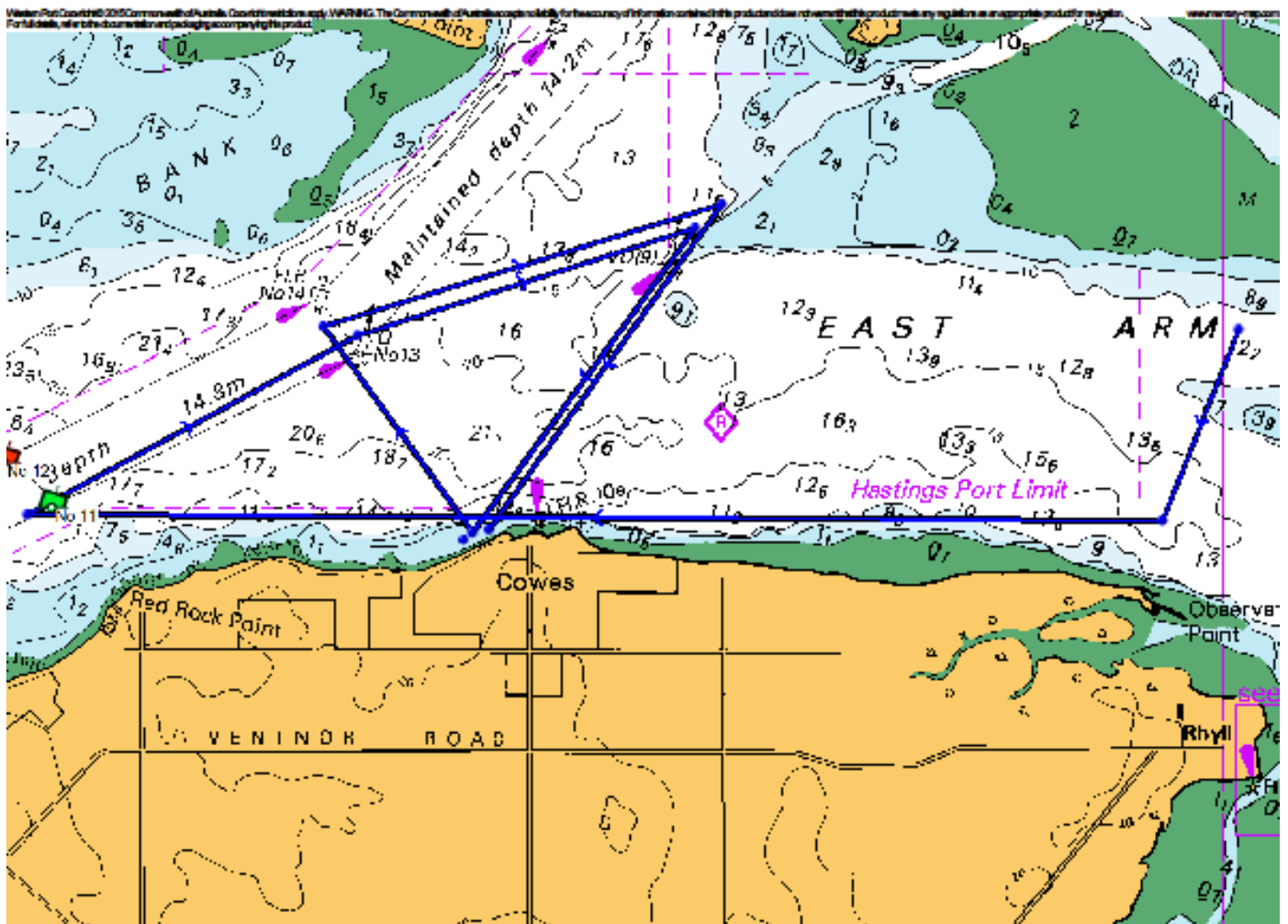
**Note: All course Diagrams are an approximate representation and are NOT to be used as the course description; please refer to section 7 for the Course Description.**

**Race 1. Rhyll – COWES**

**Saturday 20<sup>th</sup> January 2018**

### Diagram Course 1 Approx. 16nm

- Start
- Windward Mark (rounding side signaled as per SI from the Committee boat)
- CYC Windward buoy to Starboard
- Ch Buoy 11 to Starboard
- Ch 13 buoy to Starboard
- THB buoy to Starboard
- CYC Windward buoy to Starboard
- Ch 13 buoy to Starboard
- THB buoy to Starboard
- CYC buoy to Starboard
- Finish between CYC finish mark and CYC Club house tower.

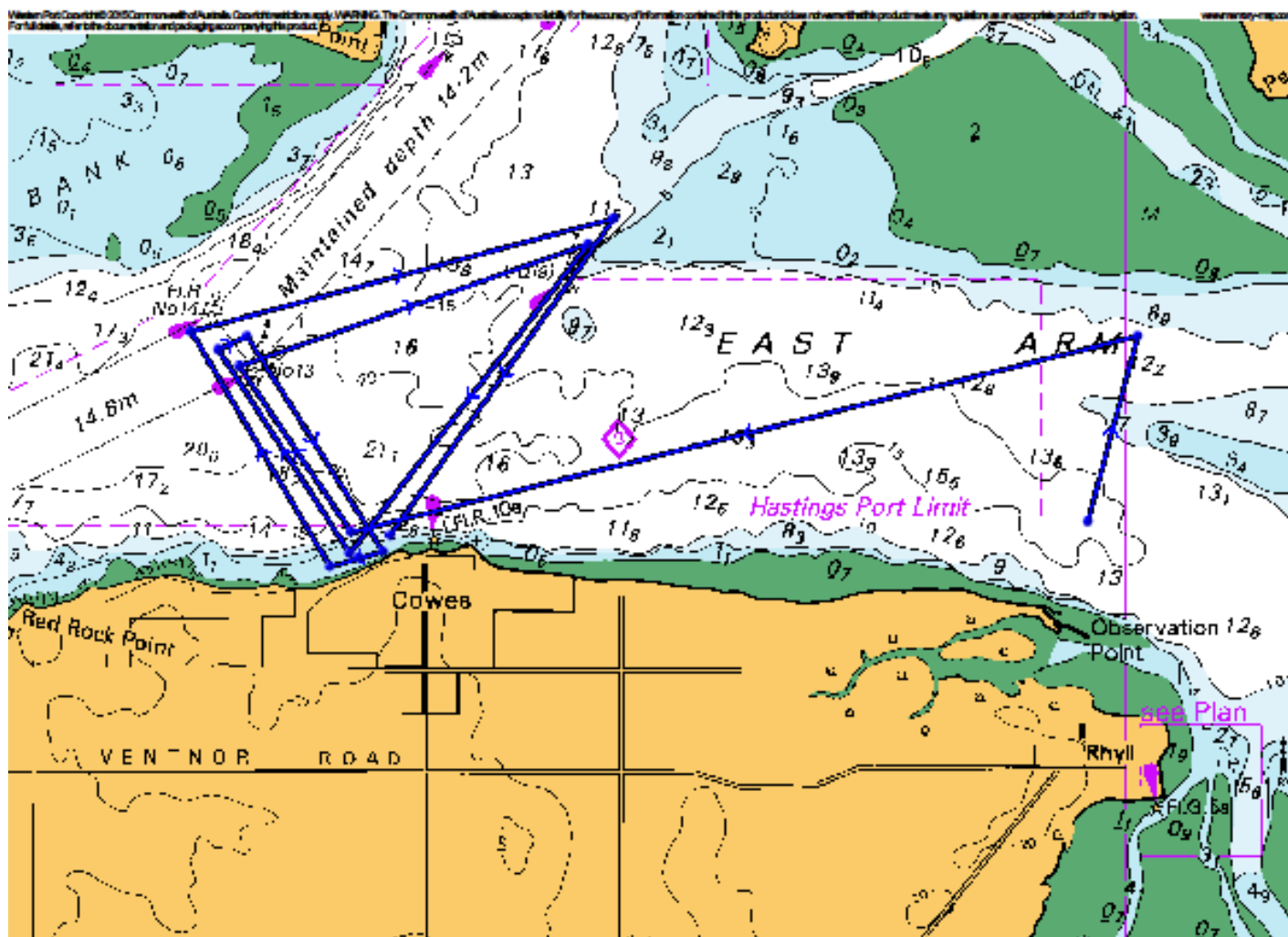


# Race 1. Rhyll – COWES

## Saturday 20<sup>th</sup> January 2018

### Diagram Course 2 Approx. 16nm

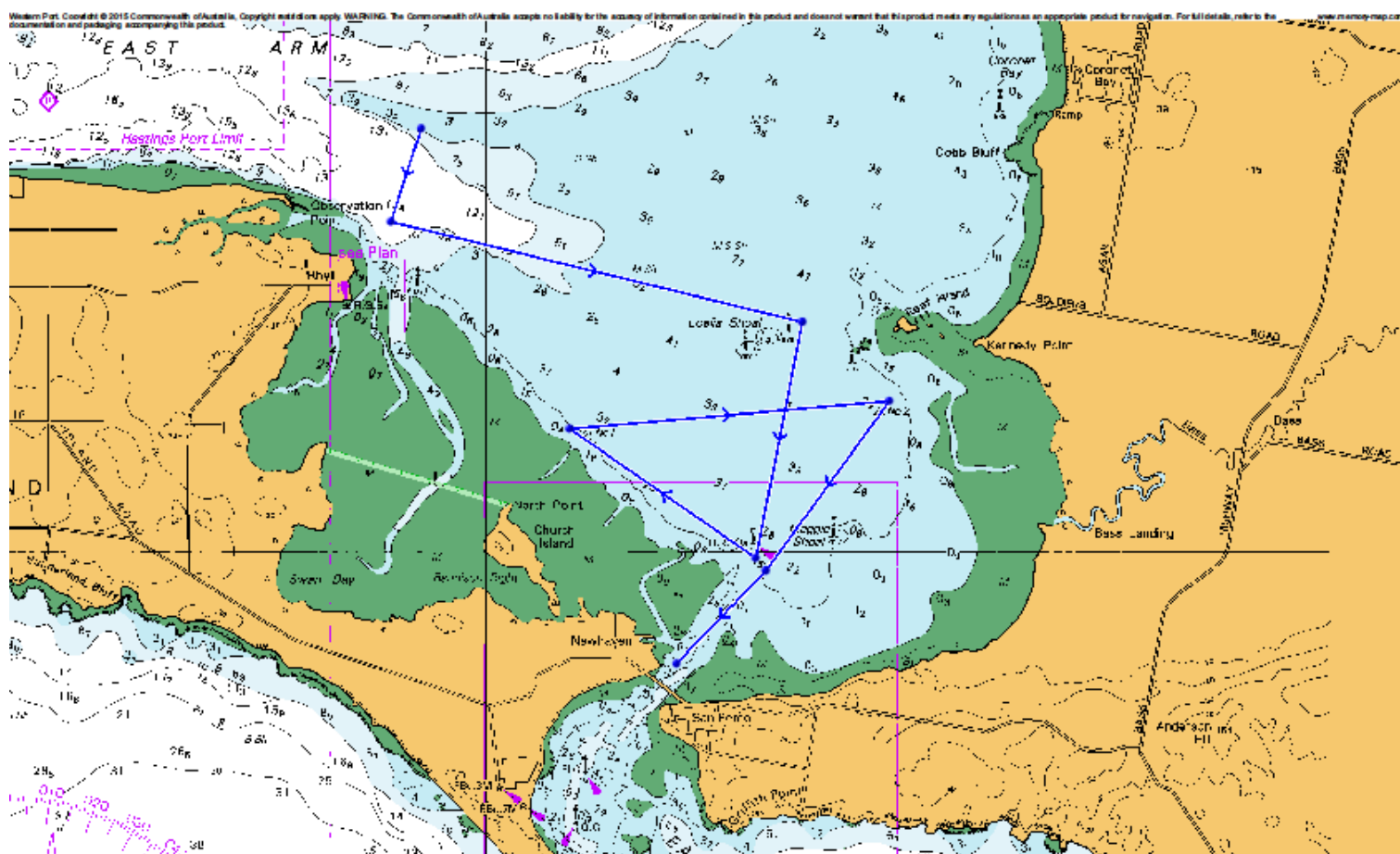
- Start
- Windward Mark (rounding side signaled as per SI from the Committee boat)
- CYC Leeward buoy to Starboard
- Ch 13 to Starboard
- THB to Starboard
- CYC Leeward buoy to Starboard
- Ch 13 to Starboard
- CYC Leeward buoy to Starboard
- Ch 13 to Starboard
- THB to Starboard
- CYC buoy to Starboard
- Finish between CYC finish mark and CYC Club house tower.



## Race 2. Rhyll – NEWHAVEN Saturday 24<sup>th</sup> February 2018

### Course 1

- Start
- Windward Mark (rounding side signaled as per SI from the Committee boat for this rounding only)
- Loelia Shoal East Cardinal to starboard (Newhaven YS D)
- Newhaven Top Light to starboard (Newhaven YS A)
- Churchill Island Buoy to starboard (Newhaven YS Buoy B)
- Newhaven Buoy C to starboard
- Newhaven Top Light to starboard (Newhaven YS A)
- Finish Line-A line between the Newhaven Channel light (green) and the North East corner of the Newhaven Yacht Squadron clubhouse.

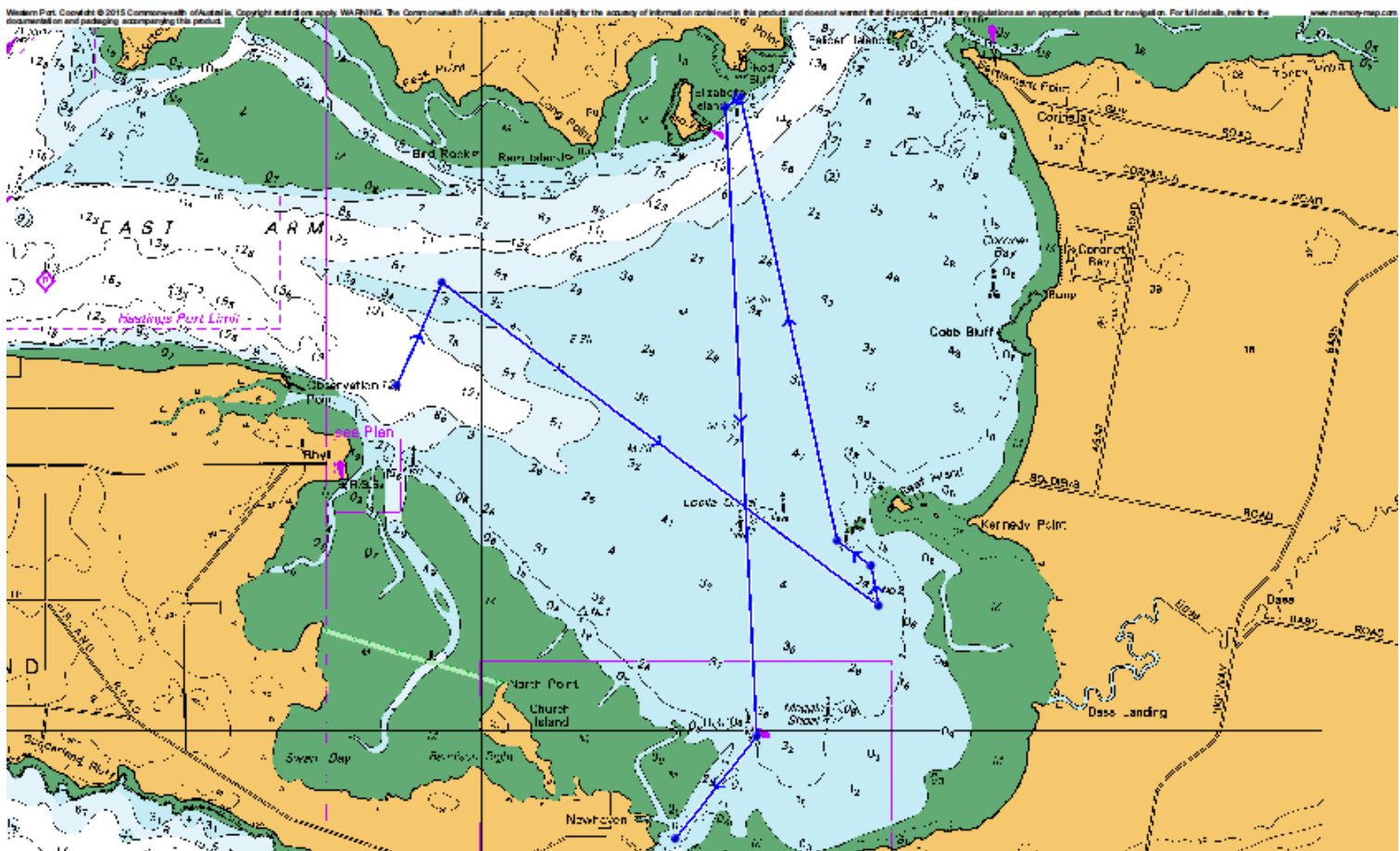




## Race 2. Rhyll – NEWHAVEN Saturday 24<sup>th</sup> February 2018

### Course 2

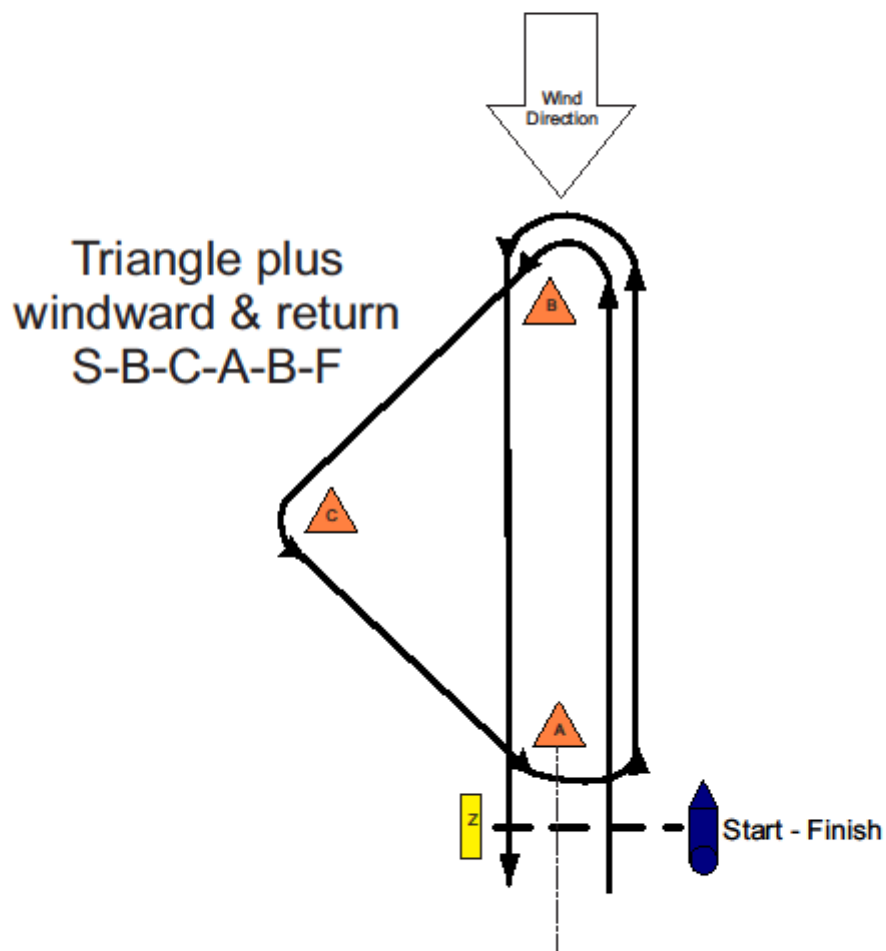
- Start
- Windward Mark (rounding side signaled as per SI from the Committee boat for this rounding only)
- Newhaven Buoy C to port
- Reef Island West Cardinal to starboard
- Elizabeth Island Hydrology to port (Newhaven YS F)
- Newhaven Top Light to starboard (Newhaven YS A)
- Finish Line-A line between the Newhaven Channel light (green) and the North East corner of the Newhaven Yacht Squadron clubhouse.



**Race 3. Rhyll – RHYLL**  
**Saturday 3<sup>rd</sup> March 2018**

**Course 1 – Length approx. 12nm – All rounding marks to Port**

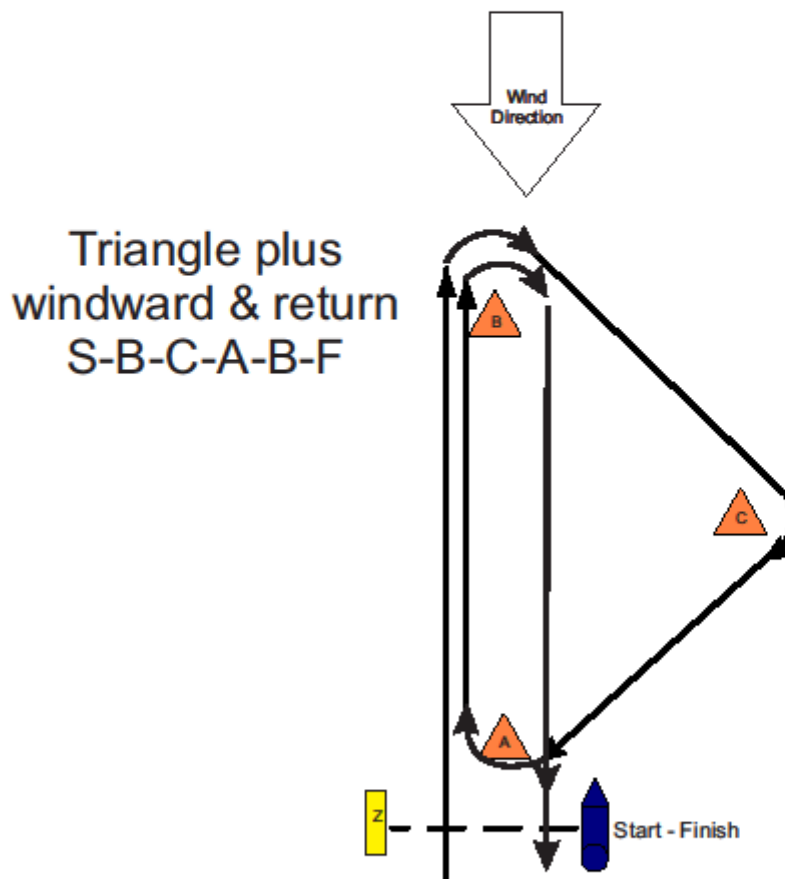
- Start
- RYC Laid Mark B
- RYC Laid Mark C
- RYC Laid Mark A
- RYC Laid Mark B
- Finish



**Race 3. Rhyll – RHYLL**  
**Saturday 3<sup>rd</sup> March 2018**

**Course 2 – Length approx. 12nm – All rounding marks to Starboard**

- Start
- RYC Laid Mark B
- RYC Laid Mark C
- RYC Laid Mark A
- RYC Laid Mark B
- Finish



# TRIANGULAR SERIES 2018

## Approximate Mark Locations - ADDENDUMB

<b>Mark</b>	<b>Approximate Location</b>
Start	Orange or Yellow inflatable laid mark north of Rhyll inlet
Windward rounding mark	Orange or Yellow inflatable mark approx. 1000m upwind from the start line
Finish	As described on each course
Ch Buoy 13	S38 25.997 E145 13.348
Ch Buoy 11	S38 26.703 E145 11.543
Ch Buoy 17	S38 24.286 E145 15.185
Ch Buoy 19	S38 23.117 E145 14.793
Tortoise Head West Cardinal Mark (THB)	S38 25.584 E145 15.154
Loelia East Cardinal Mark D	S38 28.210 E145 23.151
Churchill Island Buoy B	S38 29.055 E145 21.050
Rhyll North Cardinal	S38 27.830 E145 19.292
Elizabeth Island Hydrology Pile F	S38 24.976 E145 22.667
Newhaven YS Buoy C	S38 28.897 E145 24.089
Newhaven Top Light Mark A	S38.29.947 E145 22.780
Newhaven Channel Light (Green)	S38.30.703 E145 22.255
Reef Island West Cardinal	S38.28.468 E145.28.818
CYC Buoy	Purple inflatable laid approx. 750m North West of Cowes Yacht Club
CYC Finish mark	Orange inflatable approx. 300m directly north of CYC Club House.
RYC Laid Marks A, B, C	Laid in Western Port Bay, general area North of Rhyll.